

Corporate Health Management
A programme based on two support pillars



HR data on absenteeism

Active management of cases of incapacity

Health promotion campaigns

Care Management

Implementation of customised measures

Therapeutic measures

Manager training

Workplace assessment

Accident prevention workshops

Case Management

Coordination with social insurance institutions

Online Customer Area

Mediation

Non-binding and personal advice

0848 803 777
groupemutuel.ch/chm

Corporate Health Management (CHM)

Happy and healthy employees for a successful company

groupemutuel



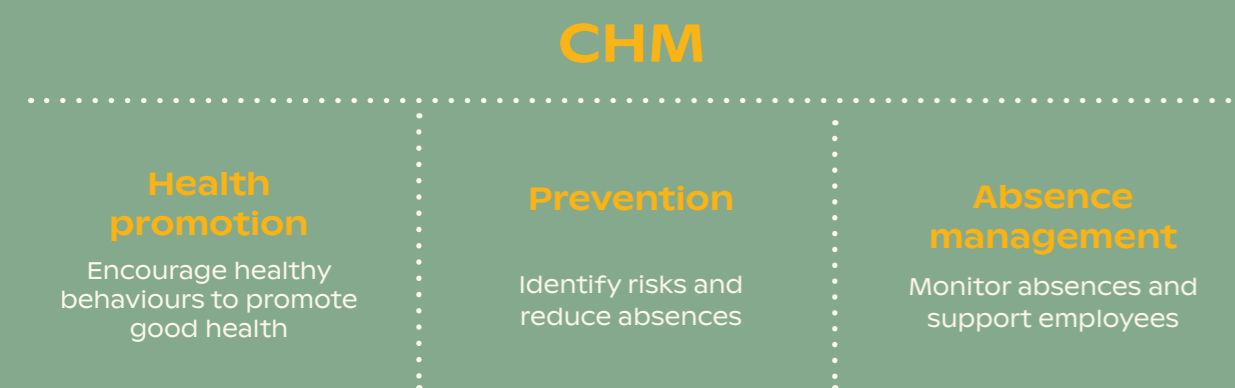
Groupe Mutuel Holding SA | Rue des Cèdres 5 | CH-1919 Martigny | 0848 803 777 / gse@groupemutuel.ch
Insurance companies of Groupe Mutuel Holding SA: Avenir Assurance Maladie SA / Easy Sana Assurance Maladie SA / Mutuel Assurance Maladie SA / Philos Assurance Maladie SA / SUPRA-1846 SA / AMB Assurances SA / Groupe Mutuel Assurances GMA SA / Groupe Mutuel Vie GMV SA
Foundations administered by Groupe Mutuel Services SA: Groupe Mutuel Prévoyance-GMP / Mutuelle Neuchâteloise Assurance Maladie / Option Vested Benefits Foundation / Fondation Collective Option

groupemutuel

What is Corporate Health Management (CHM)?

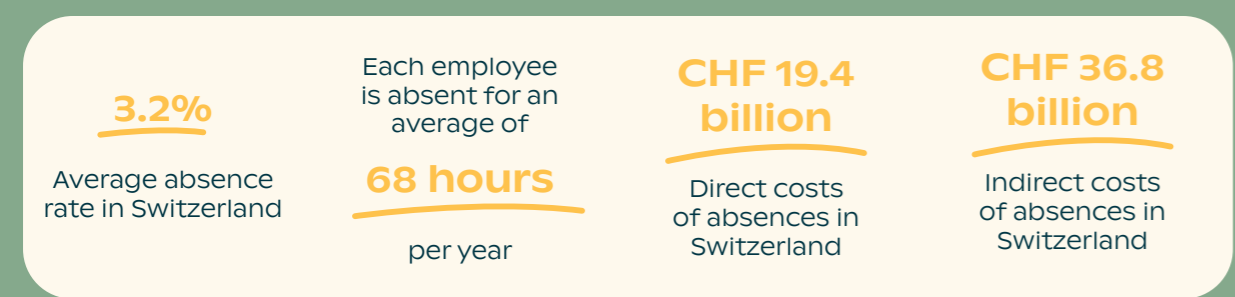
The CHM programme aims to implement measures and tools designed to support your employees. Healthy employees are essential for your company's success. We undertake to work by your side to implement a Corporate Health Programme that will serve your ambitions.

CHM pillars



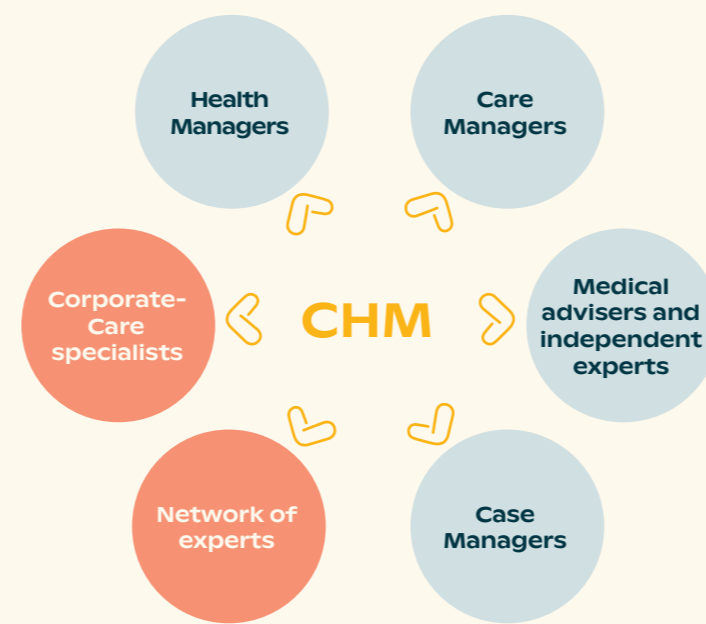
What are the consequences of absences?

In Switzerland, every year, absences due to illness or accident can cost you a lot of money.



A skilled team to support you

More than 200 specialists at your service throughout Switzerland



CorporateCare

CorporateCare, specialists

CHM experts will assess the absenteeism rate in your organisation. They will suggest, give priority to and implement measures and tools to improve your organisation's productivity while ensuring that your employees' working conditions are of high standard.

Network of experts

This network of external specialists provides access to specific expertise for the implementation of your measures (ergonomics, occupational psychology and medicine, etc.).

HumanCare

Health Managers

They are the privileged contacts for cases of work incapacity who will collect and assess your claims. They monitor the stages of the process in coordination with the relevant social institutions (AI/IV, unemployment insurance, pension funds, etc.)

Care Managers

They meet quickly with people who are off work to understand the causes and identify how they can provide support.

Medical advisers and independent medical experts

They assess and check work capacity and give their opinion on treatments and other medical issues.

Case Managers

Called upon to assist in complex cases of incapacity with a potential for return to work, they assist employees with a health problem and support your HR department in the process.

Your advantages



Combine **performance** and **well-being** at work



Choose a **supportive** management style



Attract and **retain** your employees by being an **attractive employer**



Give a **positive image** of your company to your partners

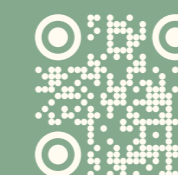


Reduce absenteeism and **absence-related costs**

Our expertise

- The reference partner for Health and Pension matters
- Over 20 years of experience in CHM
- A full series of training courses on the subject of early detection and absence management
- A number of partnerships with experts involved in CHM
- Internal Case Management (midwives, psychotherapy, physiotherapy, conflict management, etc.)
- Internal Care Management (administrative support, alternative measures, etc.)
- Detailed dashboards of your claims experience
- Active and integrated management of your cases of work incapacity

Groupe Mutuel is the only multiline health and pension insurer for both private and corporate customers.



www.groupemutuel.ch/chm